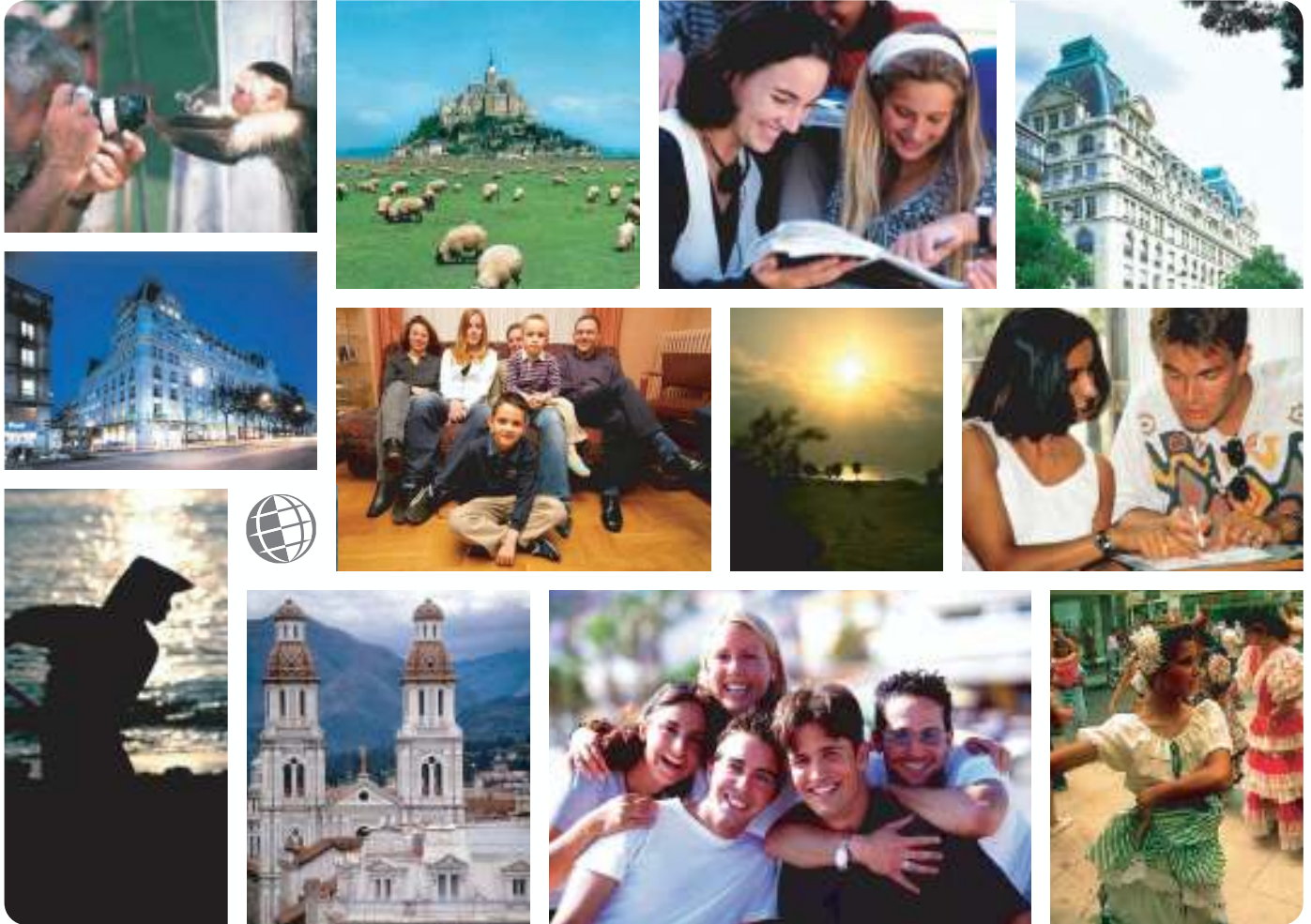


*Live the Language
Learn the Culture*

Foreign Language and Cultural Immersion Since 1968
**NATIONAL REGISTRATION CENTER
FOR STUDY ABROAD**



Spain 2008-2009

For more information please visit: www.nrca.com

NRCSA is a proud member of:



National Registration Center for Study Abroad
PO Box 1393 Milwaukee, Wisconsin 53201 USA
Tel: (414) 278-0631 Email: study@nrca.com

National Registration Center for Study Abroad (NRCSA)

P.O. Box 1393, Milwaukee, WI 53201 USA. Tel. 414 278 0631 Fax. 414 271 8884



Learn the Culture  Live the Language  Since 1968

ENFOREX LANGUAGE SCHOOL – GRANADA, SPAIN

ABOUT THE SCHOOL AND THE CITY

ENFOREX Spanish Language School is an institution founded in 1989, recognized by the Spanish Ministry of Education and by the "Instituto Cervantes", which is the official entity that promotes the Spanish Language and culture throughout the world. Perfection in work and enthusiasm for every task it develops is part of ENFOREX philosophy. ENFOREX is a member of FIYTO, BELTA, NAFSA, ALTO, UNION LATINA, AEEM, AMACFE, and AECAE. The school has been certified by CEELE (Certificate of teaching Spanish as a foreign language), authorized by the department of Spanish language of the University of Alcalá, Madrid, and the Asociación de Español como Recurso Economico.

Granada is a scenic city at the foot of the Sierra Nevada, a relic of a thousand and one nights. The warmest coast in Europe, the "Costa Tropical" can be reached within 45 minutes. The highest mountain of the Iberian Peninsula is also at an arm's distance. Granada, the cradle of the most diverse cultures, was always a beloved city. Romantic 19th century intellectuals lived here, as well as the ancient Greeks, Romans, Phoenicians and the Moorish. Granada is certainly the city in Europe with the most evident traces of the Moor empire. The majesty of the Alhambra Palace dominates the city. The Albaicin, the gypsies' quarter, the Sacromonte with the small rebuilt pubs and Flamenco stages are all witness to a lively past.

ABOUT THE PROGRAM

The school offers 8 levels of study: Initial, Basic, Elementary, Low Intermediate, High Intermediate, Advanced, High Advanced, Proficiency. Students normally upgrade one level every 4 weeks.

The teaching methodology is based on the study of linguistic skills as well as in the study of the socio-cultural aspects of Spanish culture. In the courses the 4 skills of the language are focused on: oral comprehension, reading comprehension, oral expression and written expression, in which the grammar structures needed to reach the communicative competence are studied. To learn a language is to live a language, that is why students need to be immersed into the culture. Spanish culture is always present in classroom instruction.

General Spanish Courses Group 22 or 30 hours per week. General Spanish Courses take place during the whole year with no limit in length. Students may start any Monday of the year except for complete beginners who should start on specific starting dates. Class sizes are small, having an average of 5 students per class and a maximum of 8. Students will have two different teachers every day, making the courses very dynamic

Christmas Course Two weeks of lessons (20 lessons per week) and is designed to accommodate those who wish to utilize their holiday time studying. The course also includes excursions and cultural activities such as visits to typical Spanish Christmas scenes, nativity exhibitions as well as the Epiphany parade. As it is offered in an off-peak period, museums and other sites of interest are often less crowded than at other times of the year. There are always lots of typical Christmas activities in which you can participate that allow a full immersion in Spanish culture and the traditions of the season. We do not close for the Christmas/holiday season. Our schools do observe the 25th of December, the 1st of January and other local/special holidays. Special holidays are set by Provincial and local governments so can be subject to change by location but, in all cases we guarantee you 20 lessons per week.

ACCOMMODATIONS

Homestay: This lodging option will enable the student to have a closer look at the Spanish culture and customs while living everyday life with a well selected Spanish family. Students may choose to have a single or double room and 2 meals daily is included in the cost. 3 meals daily is available at additional cost.

Student Residence: Residences are located in the centre of the city, 5 to 15 minutes from the school. Choose between a single or a double room (subject to availability) and 2 meals daily is included in the cost. This option is available at additional cost.

Student Apartments: This option is available upon request and at additional cost. Price includes bed linen, blanket, access to fully equipped kitchen and laundry room, shared bathroom, Central heating, weekly cleaning of the common areas, water, electricity and gas costs.

Hotels: 3 or 4 star. Normally the hotel will be located less than 5 minutes walk from ENFOREX. This option is available at additional cost.

SPECIAL ACTIVITIES

During the week ENFOREX organizes afternoon activities and excursions such as visits to museums, churches or the typical areas of Marbella & Barcelona which are usually free of charge. On weekends the school organizes full day trips or weekend trips taking students to other cities in Spain at a very low cost.

TO REGISTER:

Complete the NRCSA Preregistration Form or contact the National Registration Center for Study Abroad at 823 North 2nd Street, P.O. Box 1393, Milwaukee, WI 53201 USA, or by calling (414) 278-0631; by Fax (414) 271-8884.

Check out our website at <http://www.nrcsa.com>
or e-mail us at study@nrcsa.com

Programs & Activities - Granada, Spain

Programs

The school offers 8 levels of study: Initial, Basic, Elementary, Low Intermediate, High Intermediate, Advanced, High Advanced, Proficiency. Students normally upgrade one level every 4 weeks.

The teaching methodology is based on the study of linguistic skills as well as in the study of the socio-cultural aspects of Spanish culture. In the courses the 4 skills of the language are focused on: oral comprehension, reading comprehension, oral expression and written expression, in which the grammar structures needed to reach the communicative competence are studied. To learn a language is to live a language, that is why students need to be immersed into the culture. Spanish culture is always present in classroom instruction.

On the first day of class at 9:30 non beginners are required to take an oral and written test in order to accurately determine their level of Spanish. Beginners who have never studied Spanish before are not required to take the placement test. Each lesson lasts 55 minutes.

General Spanish Courses Group 22 or 30 hours per week. General Spanish Courses take place during the whole year with no limit in length. Students may start any Monday of the year except for complete beginners who should start on specific starting dates. Class sizes are small, having an average of 5 students per class and a maximum of 8. Students will have two different teachers every day, making the courses very dynamic



Every week 2 hours out of the General Spanish Courses are dedicated to specific subjects, such as:

- Spanish Civilization: Culture, traditional "fiestas", gastronomy, free time, folklore.
- Literature: Spanish and South American writers and their work.
- Art: Spanish architecture, painters and main sculptors.
- History: From the Spain of the Catholic King and Queen up to the present.
- Commercial Spanish: business letters, presentations.
- Legal Spanish: types of companies in Spain, labor law.
- Preparation for the DELE. (Diploma of Spanish as a Foreign Language).
- Debates and Conferences on various current topics, such as: the institution of the Monarchy, Spanish films, Women in the Work Place, Past and Present of South America, Spain in the European Union and many more that can be of the interest of the students.

Christmas Course This course consists of two weeks of lessons (20 lessons per week) and is designed to accommodate those who may wish to utilize their holiday time studying. The course also includes excursions and cultural activities such as visits to typical Spanish Christmas scenes, nativity exhibitions as well as the Epiphany parade. As it is offered in an off-peak period, museums and other sites of interest are often less crowded than at other times of the year. There are always lots of typical Christmas activities in which you can participate that allow a full immersion in Spanish culture and the traditions of the season. We do not close for the Christmas/holiday season. Our schools do observe the 25th of December, the 1st of January and other local/special holidays. Special holidays are set by Provincial and local governments so can be subject to change by location but, in all cases we guarantee you 20 lessons per week.

Admissions & Academic Credit

Students age 16 years and older are welcomed regardless of educational background, occupation or nationality. No previous knowledge of Spanish is required except where otherwise indicated.

Students desiring credit for their study should contact their home school or request the NRCSA Credit Fact Sheet. Generally, U.S. universities consider 15 hours of study to be equal to 1 semester credit.

For more information about academic credit in Spanish speaking countries, [please click here](#).
For general information on academic credit, [please click here](#).

Programs

General Spanish
Courses
Christmas Course

Admissions &
Academic Credit
Certificates & Exams

Activities

Cultural & Excursion
Activities

Comments

*"NRCSA met all of my needs.
The school I attended and
overall experience was
wonderful."*

Teacher, Tustin, CA

Certificates & Exams

At the end of the course, students will be given a school certificate stating the number of hours received as well as the attained level. They will also obtain a pedagogical report issued by the Director of Studies specifying the progress attained in the different language skills.

The DELE diplomas are official diplomas given by the Spanish Ministry of Education and Science which recognize the candidate as having a certain skill level in the Spanish language. The exams are held in May and November. When starting the DELE course students should have the immediately lower level to the exam they are going to take. Examination fees are included in the DELE course fees. Deadline to register for the examination is 6 weeks before the examination date.

Preparation courses for the following DELE exams is offered at additional cost:

1. Certificado Inicial: low intermediate Certificate. Exam date: beginning of May
2. Diploma Basico: upper intermediate Diploma. Exam date: beginning of May and middle of November
3. Diploma Superior: proficiency Diploma. Exam date: middle of November

National Registration Center for Study Abroad
P.O. Box 1393 Milwaukee, WI 53201 USA
Tel: (414) 278-0631 **Fax:** (414) 271-8884 **E-Mail:** study@nrca.com

ALL NRCSA PROGRAMS INCLUDE:

- ✓ Foreign language immersion classes
- ✓ Small interactive group and/or one-on-one instruction
- ✓ Culture program integrated into conversation classes, activities
- ✓ Meet-the-People interaction at school, homestays, & community events
- ✓ Orientation covering attractions, how to, health, safety, entertainment
- ✓ Academic assessments, placement-exit tests, Achievement Certificate
- ✓ Lodging (reduced fee if no lodging needed)
- ✓ Meals and/or cooking facilities at most centres
- ✓ Insurance: medical and accident - see below
- ✓ Emergency Hotline staffed 24 hours/day - see below
- ✓ Housing Coordinator familiar with area homestays, apartments, hotels
- ✓ Activity Coordinator facilitates transfers, cultural/social activities, tours
- ✓ Program Director experienced working with foreign participants
- ✓ Qualified, experienced, and certified educators
- ✓ Weekly proficiency goals and progress assessments
- ✓ Planning and Orientation materials
- ✓ International Ambiance, participants from around-the-world welcome
- ✓ Telecom assistance, web/e-mail access, usually on-site
- ✓ Local taxes for included services
- ✓ 24:7 Culture Immersion w/ native speakers: class, homestay, community
- ✓ **ALL NRCSA PROGRAMS INCLUDE the following INSURANCE***

ACCIDENT INSURANCE up to \$10,000 SICKNESS INSURANCE up to \$10,000

EMERGENCY MEDICAL EVACUATION up to \$25,000

EMERGENCY REUNION up to \$5,000

REPATRIATION up to \$7,500

LIFE INSURANCE \$5,000

plus

24 HOUR EMERGENCY WORLDWIDE MULTI-LINGUAL TELEPHONE ASSISTANCE

MANY ALSO OFFER

- ✓ **Tours:** cultural visits, day and weekend fieldtrips
- ✓ **Art:** classes/workshops, craft, dance, theater, fashion, music, photo
- ✓ **Humanities:** culture, area studies, hist, lit, gov't, educ, comm, plus...
- ✓ **Health:** golf, swimming, tennis, diving, skiing, riding, plus...
- ✓ **Special:** vocabulary classes tailored to your professional needs
- ✓ **Lodging:** homestay, apartment, dorm, hotel, special diet
- ✓ **Food:** home cooking, cooking classes, dine-around, wine tasting
- ✓ **Family:** services, daycare, child classes, community services
- ✓ **Teacher:** training, workshops, practicums, practice teaching, ECH
- ✓ **Teen:** camps and youth programs (including experiential)
- ✓ **University:** credit, undergraduate and graduate
- ✓ **Professional:** development credit in many fields, licensure, CEU
- ✓ **Volunteer:** medical, social service, ecology, teach plus...
- ✓ **Internships:** business, media, arts, eco, tourism, computer, plus...
- ✓ **Business:** classes, visits, networking, executive support services
- ✓ **Peer-to-Peer:** share interests, network by profession or hobby
- ✓ **Current Events & Professional Workshops, Holiday Courses**
- ✓ **Distance** educ liaison service, independent studies, research assist
- ✓ **Free** books and course materials. Return at end of studies
- ✓ **Free** airport transfers and internet access
- ✓ **Assessment** reports for attendance, progress, acculturation if needed
- ✓ **Medical:** professional training, law, social work, sciences etc.

** If you have a problem while studying abroad, call the 24 hour hotline! Call Any Time from Anywhere! Medical or travel emergencies, legal or medical or embassy referrals, lost passport or luggage, emergency message relay, coordinating emergency prescription replacement or cash transfer, emergency translations, 24-hour medical monitoring. Problems seldom occur, but when they do, it is nice to know insurance and worldwide assistance are included in your cost for study dates prepaid through NRCSA as reflected on your NRCSA confirmation. Additional optional insurance available upon request. Refer to the certificate for specific terms, conditions and other details regarding benefits, limitations, eligibility and exclusions of this plan. Questions? Contact NRCSA: Tel: 414-278-0631 ... E-Mail: info@nrcca.com ... Web: <http://www.nrcca.com>*

For Questions, Concerns, or Registration, Contact NRCSA
National Registration Center for Study Abroad * Box 1393, Milwaukee WI 53201 USA
Tel 414-278-0631 * Fax 414-271-8884* www.nrcca.com * info@nrcca.com
Since 1968 * Language-Culture Immersion Worldwide * Start Weekly * All Ages * Credit, CEU or Enrichment

PREREGISTRATION FORM – NRCSA PROGRAMS

1. Complete & send to NRCSA, P.O. Box 1393, Milwaukee, WI 53201, USA • Tel. (414) 278-0631 • Fax (414) 271-8884 • Web: www.nrca.com
2. Enclose a non-refundable deposit/registration fee of \$140 per person, per program, payable to NRCSA (\$40 registration fee & \$100 program deposit applied towards the program costs).
3. Register early. Add \$40 per person late enrollment fee if paying in full within 40 days of departure. Within 20 days, payments by certified check.
4. Credit Cards may be used for deposits (see "H" below). NRCSA street address for overnight deliveries is 207 East Buffalo Street, Suite 610, Milwaukee, WI 53202 USA. You are welcome to photocopy this form. Please send separate form for each school if taking multiple programs.

A. Name(s) _____ Sex _____ Birthdate _____ Citizenship _____
Please print

_____ Employer _____ Occupation _____
If student, school attending and year

Street: _____ Tel. Home: _____
Street address (not P.O. Box) where someone can sign for documents sent to you.

City/State/Zip: _____ Tel. Work: _____
 Fax: _____
 E-mail: _____

In Emergency, notify: _____
(Name, Address, Phone)

B. BACKGROUND: _____
Describe your background in the course you're taking abroad. Check your ability level:

- Beginner Post Beginner
 Intermediate Advanced

C. LODGING: _____
Schools will try (cannot guarantee) to meet them. Special Diet (may be available) at additional cost.

- Check Preferences.**
 Single Share Twin Other: _____
 Yes Smoking No Smoking Either
 Yes Pets No Pets Either
 Yes Children No Children Either

D. GOALS: _____

- PREFER:** Homestay Involvement Freedom to Come/Go
ARE YOU? Quiet Outgoing Frequent Traveler
OBJECTIVES: Enrichment Academic Credit Job Related
HOBBIES: Reading Music Cooking Jogging Sports

E. INSURANCE: Includes prepaid study dates. To extend coverage up to 30 days before/after study dates, add \$5/day or \$19/week and advise dates.

F. PROGRAM INFORMATION	School/Center
Program Name (use title from Dates & Fees)	City/Country
Date: Start Program	Date: Start Lodging (most start day before)
No. of hours day/week	No. of weeks attending
Disabilities/Allergies/Health Problems	2nd Choice Program
How did you learn about NRCSA?	Social Security Number
Options (see program for choices)	
Your Signature (if you are under age 18, both parents must also sign)	

INSURANCE INCLUDED for PRE-PAID STUDY DATES

ACCIDENT / MEDICAL INSURANCE UP TO \$10,000

EMERGENCY MEDICAL EVACUATION UP TO \$25,000

EMERGENCY REUNION UP TO \$5,000

REPATRIATION UP TO \$7,500

LIFE INSURANCE \$5,000

24 HOUR EMERGENCY WORLDWIDE-MULTI-LINGUAL TELEPHONE ASSISTANCE

For More Info: <http://www.nrca.com/INS24hrHotline.html>

H. CREDIT CARDS:

For program deposit only (*not final payment*) check:
 VISA Mastercard American Express Amount Charged \$ _____

Card Number (13 or more numbers) Exp Date

SIGNATURE (as on card) PRINT name (as on card)

CHANGE FEES of at least \$35 apply for each change you make. Some "changes" may result in cancellation fees.

CANCELLATIONS are effective the day received in writing by NRCSA in Milwaukee. All payments less \$140 per program fully refundable up to 60 days prior to departure. For cancellations within 60 days of departure, \$250 per person is not refundable; within 40 days of departure, less 50% of program cost or \$300 per person (whichever is greater); within 14 days of departure, 100% of program cost is non refundable. Airline cancellation penalties, if any, are in addition to those outlined above. Cancellation penalties are per person, per program. Medical, baggage (above that included) and cancellation insurance is strongly recommended. Attach a note if you have a medical condition or Rx which the school/center should know about.

CONDITIONS: Each institution listed herein is independent of the National Registration Center for Study Abroad (hereinafter referred to as NRCSA, controls, and will periodically make changes in the program. Classes may fill, be changed, or dropped by the sponsoring academic institutions. NRCSA is a division of Mibar Ltd. and is not responsible for these changes or other actions beyond its control such as strikes, postal delays or loss, mechanical breakdowns, weather, government actions, delay or acts/omissions of suppliers. NRCSA may make changes or substitutions or cancel any program. In the event of entire program cancellation by NRCSA, liability is limited to refunding all monies paid to NRCSA for said program. Passengers electing not to use portions of a program shall not be entitled to a refund. No agent or representative of NRCSA shall have the right to alter the provisions listed herein. Costs based on tariffs and exchange rates effective the date of printing of this material, and are subject to change. Additional costs resulting from such change will be paid by the participant. Registrations are valid when accepted by NRCSA in Milwaukee. The passage contract used by the airline, when issued, is the sole agreement between it and you. Photographs of or statements by participants may be used by NRCSA. NRCSA, group leaders or foreign coordinators, at their discretion, may get medical assistance for participants, or place them in a hospital, or fly them back to the U.S. for medical treatment. All costs related to medical treatment or evacuation will be paid by the participant. As visitors you are expected to adhere to foreign rules and customs. If the foreign staff feels you are not adhering to these rules and customs, your participation in the program shall terminate immediately without refund whatsoever. A "homestay" is defined as living with a local person(s) in the foreign country and may not be multi generational, multinational, etc. It is the responsibility of the participant to have required proof of citizenship and visa(s) if applicable - check with the consulate of the country(s) you will be visiting.

INFORMATION USE: Information provided to NRCSA will be shared with participating organizations to facilitate your registration.

NOTE: Classes canceled in honor of local holidays are not made up. Foreign Language schools use placement tests. If there is no group at your level, smaller group or tutor classes may be substituted with fewer hours per week. Classes are conducted entirely in the target language. See **Fast Facts Guide** for more information.